

FOREMAN- Enrique

San Diego S1602, S1603 and S1405

Week 17

Day	Date	Contract	Trash Day	SAPID	TB Map Page	Street Name	Cross Street 1	Cross Street 2	Survey Length	Survey Width	Est. Survey Area	AsBuilt Area SF	AsBuilt Slurry Date	Post	Notify
Monday	7/11/2016					Tierrasanta									
TYPE I/TYPE III	Type 3	S1601		SS-012806	1249-F1	GUINDA CT	BEGIN	ANTIGUA BL	236	19	4484				
TYPE I/TYPE III	Type 3	S1601		SS-021196	1249-F1	PARK CREST LN	BEGIN	PARK CREST WY	117	20	2340				
TYPE I/TYPE III	Type 3	S1601		SS-021194	1249-F1	PARK CREST LN	RIMPARK LN	END	103	25	2575				
TYPE I/TYPE III	Type 3	S1601		SS-021195	1249-F1	PARK CREST LN	PARK CREST WY	RIMPARK LN	227	19	4313				
TYPE I/TYPE III	Type 3	S1601		SS-023226	1249-F1	RIMPARK WY	QUEMADO CT	ANTIGUA BL	490	19	9310				
TYPE I/TYPE III	Type 3	S1601		SS-023224	1249-F1	RIMPARK WY	ANTIGUA BL	RIMPARK LN	91	29	2639				
TYPE I/TYPE III	Type 3	S1601		SS-012807	1249-F1	GUISANTE LN	GUISANTE TR	APPLE TREE DR	101	29	2929				
TYPE I/TYPE III	Type 3	S1601		SS-012809	1249-F1	GUISANTE TR	CANFORERO TR	GUISANTE LN	388	19	7372				
TYPE I/TYPE III	Type 3	S1601		SS-016299	1249-G1	LEMONWOOD LN	EDGE PARK WY	RIMVIEW WY	268	19	5092				
TYPE I/TYPE III	Type 3	S1601		SS-020236	1249-G1	OAKLEAF PT	BEGIN	END	110	36	3960				
TYPE I/TYPE III	Type 3	S1601		SS-020239	1249-G1	OAKLEAF PT	BEGIN	ANTIGUA BL	254	20	5080				
TYPE I/TYPE III	Type 3	S1601		SS-020237	1249-G1	OAKLEAF PT	BEGIN	END	111	32	3552				
TYPE I/TYPE III	Type 3	S1601		SS-020802	1249-G1	OUTLOOK PT	BEGIN	ANTIGUA BL	226	19	4294				
TYPE I/TYPE III	Type 3	S1601		SS-018408	1249-G1	MIRABEL LN	BEGIN	END	51	21	1071				
TYPE I/TYPE III	Type 3	S1601		SS-018407	1249-G1	MIRABEL LN	REBOLLA LN	END	386	19	7334				
TYPE I/TYPE III	Type 3	S1601		SS-022818	1249-G1	REBOLLA LN	MIRABEL LN	END	75	23	1725				
TYPE I/TYPE III	Type 3	S1601		SS-022819	1249-G1	REBOLLA LN	RANETA LN	MIRABEL LN	156	25	3900				
TYPE I/TYPE III	Type 3	S1601		SS-011967	1249-G1	GAYUBA LN	BEGIN	ESCARCHOSA LN	129	25	3225				
TYPE I/TYPE III	Type 3	S1601		SS-011965	1249-G1	GAYUBA LN	BEGIN	END	105	22	2310				
TYPE I/TYPE III	Type 3	S1601		SS-011966	1249-G1	GAYUBA LN	BEGIN	END	92	25	2300				
TYPE I/TYPE III	Type 3	S1601		SS-010450	1249-G1	ESCARCHOSA LN	GAYUBA LN	CLAIREMONT MESA BL	240	24	5760				
TYPE I/TYPE III	Type 3	S1601		SS-010451	1249-G1	ESCARCHOSA LN	RANETA LN	GAYUBA LN	125	24	3000				
TYPE I/TYPE III	Type 3	S1405B		SS-002335	1229-G7	AMARO DR	EL COMAL DR	LA MORADA DR	377	36	13540				
TYPE I/TYPE III	Type 3	S1405B		SS-002336	1229-G7	AMARO DR	OROZCO RD	EL COMAL DR	193	36	6938				
TYPE I/TYPE III	Type 3	S1405B		SS-002337	1229-G7	AMARO DR	LA DUENA WY	OROZCO RD	194	36	6979				
TYPE I/TYPE III	Type 3	S1405B		SS-002338	1229-G7	AMARO DR	EL HONCHO PL	LA DUENA WY	262	36	9419				
TYPE I/TYPE III	Type 3	S1603	Friday	SS-003982	1249-H1	BENGAL CT	MONTEGO DR	END	524	28	14672				
TYPE I/TYPE III	Type 3	S1603	Friday	SS-013827	1249-H1	HUARACHA CT	MONTEGO DR	END	329	30	9870				
TYPE I/TYPE III	Type 3	S1603	Friday	SS-017383	1249-H1	MANTUA CT	MONTEGO DR	END	351	30	10530				
TYPE I/TYPE III	Type 3	S1603	Friday	SS-018873	1249-H1	MONTEGO PL	BEGIN	MONTEGO DR	205	28	5740				
											166253				

Day	Date	Contract	Trash Day	SAPID	TB Map Page	Street Name	Cross Street 1	Cross Street 2	Survey Length	Survey Width	Est. Survey Area	AsBuilt Area SF	AsBuilt Slurry Date	Post	Notify
Tuesday	7/12/2016					Tierrasanta									
TYPE I/TYPE III	Type 3	S1405B		SS-002512	1229-H7	ANTIGUA BL 1/2 Split	TORTUGA CT	SANTO RD	273	75	5208				
TYPE I/TYPE III	Type 3	S1405B		SS-002511	1229-H7	ANTIGUA BL 1/2 Split	BRAVO CT	TORTUGA CT	494	75	18502				
TYPE I/TYPE III	Type 3	S1405B		SS-002510	1229-G7	ANTIGUA BL 1/2 Split	GUINCHO CT	BRAVO CT	268	75	10046				
TYPE I/TYPE III	Type 3	S1601		SS-018016	1249-G1	MELOJO LN	REBOLLA LN	END	270	20	5400				
TYPE I/TYPE III	Type 3	S1601		SS-022820	1249-G1	REBOLLA LN	MELOJO LN	RANETA LN	236	24	5664				
TYPE I/TYPE III	Type 3	S1601		SS-008564	1249-G1	DAFNE LN	BEGIN	END	96	20	1920				
TYPE I/TYPE III	Type 3	S1601		SS-008566	1249-G1	DAFNE LN	BEGIN	END	103	20	2060				
TYPE I/TYPE III	Type 3	S1601		SS-008565	1249-G1	DAFNE LN	BEGIN	ESCARCHOSA LN	131	24	3144				
TYPE I/TYPE III	Type 3	S1601		SS-020238	1249-G1	OAKLEAF PT	ANTIGUA BL	END	224	19	4256				
TYPE I/TYPE III	Type 3	S1601		SS-023234	1249-G1	RIMVIEW WY	LEMONWOOD LN	ANTIGUA BL	257	19	4883				
TYPE I/TYPE III	Type 3	S1601		SS-021810	1249-F1	PINE KNOLL LN	BEGIN	EDGE PARK WY	320	19	6080				
TYPE I/TYPE III	Type 3	S1601		SS-002553	1249-F1	APPLE TREE DR	CAMTO VELASQUEZ	GUISANTE LN	655	38	24890				
TYPE I/TYPE III	Type 3	S1601		SS-022491	1249-F1	QUEMADO CT	ANTIGUA BL	RIMPARK WY	116	29	3364				
TYPE I/TYPE III	Type 3	S1601		SS-022492	1249-F1	QUEMADO CT	BEGIN	ANTIGUA BL	264	29	7656				
TYPE I/TYPE III	Type 3	S1601		SS-023225	1249-F1	RIMPARK WY	BEGIN	QUEMADO CT	200	19	3800				
TYPE I/TYPE III	Type 3	S1601		SS-021197	1249-F1	PARK CREST WY	PARK CREST LN	ANTIGUA BL	88	20	1760				
TYPE I/TYPE III	Type 3	S1601		SS-010453	1249-G1	ESCARCHOSA LN	BEGIN	DAFNE LN	203	19	3857				
TYPE I/TYPE III	Type 3	S1601		SS-010452	1249-G1	ESCARCHOSA LN	DAFNE LN	RANETA LN	98	24	2352				
TYPE I/TYPE III	Type 3	S1405B		SS-002339	1229-G7	AMARO DR	MUCHACHA WY	EL HONCHO PL	219	36	7875				
TYPE I/TYPE III	Type 3	S1405B		SS-002340	1229-G7	AMARO DR	AMARO CT	MUCHACHA WY	246	36	8847				
TYPE I/TYPE III	Type 3	S1405B		SS-002512	1229-H7	ANTIGUA BL 1/2 Split	TORTUGA CT	SANTO RD	273	75	5208				
TYPE I/TYPE III	Type 3	S1405B		SS-002511	1229-H7	ANTIGUA BL 1/2 Split	BRAVO CT	TORTUGA CT	494	75	18502				
TYPE I/TYPE III	Type 3	S1405B		SS-002510	1229-G7	ANTIGUA BL 1/2 Split	GUINCHO CT	BRAVO CT	268	75	10046				
TYPE I/TYPE III	Type 3	S1603	Friday	SS-022235	1249-H1	POR TECHO CT	MONTEGO DR	END	554	30	16620				
TYPE I/TYPE III	Type 3	S1603	Friday	SS-010088	1249-H1	EL NOCHE WY	BEGIN	MONTEGO DR	189	30	5670				
											181940				



Day		Contract	Trash Day	SAPID	TB Map Page	Street Name	Cross Street 1	Cross Street 2	Survey Length	Survey Width	Est. Survey Area	AsBuilt Area SF	AsBuilt Slurry Date	Post	Notify
Wednesday	7/13/2016					Tierrasanta									
TYPE I/TYPE III	Type 1	S1405B		SS-002512	1229-H7	ANTIGUA BL 1/2 Split	TORTUGA CT	SANTO RD	273	75	5208				
TYPE I/TYPE III	Type 1	S1405B		SS-002511	1229-H7	ANTIGUA BL 1/2 Split	BRAVO CT	TORTUGA CT	494	75	18502				
TYPE I/TYPE III	Type 1	S1405B		SS-002510	1229-G7	ANTIGUA BL 1/2 Split	GUINCHO CT	BRAVO CT	268	75	10046				
TYPE I/TYPE III	Type 1	S1601		SS-012806	1249-F1	GUINDA CT	BEGIN	ANTIGUA BL	236	19	4484				
TYPE I/TYPE III	Type 1	S1601		SS-021196	1249-F1	PARK CREST LN	BEGIN	PARK CREST WY	117	20	2340				
TYPE I/TYPE III	Type 1	S1601		SS-021194	1249-F1	PARK CREST LN	RIMPARK LN	END	103	25	2575				
TYPE I/TYPE III	Type 1	S1601		SS-021195	1249-F1	PARK CREST LN	PARK CREST WY	RIMPARK LN	227	19	4313				
TYPE I/TYPE III	Type 1	S1601		SS-023226	1249-F1	RIMPARK WY	QUEMADO CT	ANTIGUA BL	490	19	9310				
TYPE I/TYPE III	Type 1	S1601		SS-023224	1249-F1	RIMPARK WY	ANTIGUA BL	RIMPARK LN	91	29	2639				
TYPE I/TYPE III	Type 1	S1601		SS-012807	1249-F1	GUISANTE LN	GUISANTE TR	APPLE TREE DR	101	29	2929				
TYPE I/TYPE III	Type 1	S1601		SS-012809	1249-F1	GUISANTE TR	CANFORERO TR	GUISANTE LN	388	19	7372				
TYPE I/TYPE III	Type 1	S1601		SS-016299	1249-G1	LEMONWOOD LN	EDGE PARK WY	RIMVIEW WY	268	19	5092				
TYPE I/TYPE III	Type 1	S1601		SS-020236	1249-G1	OAKLEAF PT	BEGIN	END	110	36	3960				
TYPE I/TYPE III	Type 1	S1601		SS-020239	1249-G1	OAKLEAF PT	BEGIN	ANTIGUA BL	254	20	5080				
TYPE I/TYPE III	Type 1	S1601		SS-020237	1249-G1	OAKLEAF PT	BEGIN	END	111	32	3552				
TYPE I/TYPE III	Type 1	S1601		SS-020802	1249-G1	OUTLOOK PT	BEGIN	ANTIGUA BL	226	19	4294				
TYPE I/TYPE III	Type 1	S1601		SS-018408	1249-G1	MIRABEL LN	BEGIN	END	51	21	1071				
TYPE I/TYPE III	Type 1	S1601		SS-018407	1249-G1	MIRABEL LN	REBOLLA LN	END	386	19	7334				
TYPE I/TYPE III	Type 1	S1601		SS-022818	1249-G1	REBOLLA LN	MIRABEL LN	END	75	23	1725				
TYPE I/TYPE III	Type 1	S1601		SS-022819	1249-G1	REBOLLA LN	RANETA LN	MIRABEL LN	156	25	3900				
TYPE I/TYPE III	Type 1	S1601		SS-011967	1249-G1	GAYUBA LN	BEGIN	ESCARCHOSA LN	129	25	3225				
TYPE I/TYPE III	Type 1	S1601		SS-011965	1249-G1	GAYUBA LN	BEGIN	END	105	22	2310				
TYPE I/TYPE III	Type 1	S1601		SS-011966	1249-G1	GAYUBA LN	BEGIN	END	92	25	2300				
TYPE I/TYPE III	Type 1	S1601		SS-010450	1249-G1	ESCARCHOSA LN	GAYUBA LN	CLAIREMONT MESA BL	240	24	5760				
TYPE I/TYPE III	Type 1	S1601		SS-010451	1249-G1	ESCARCHOSA LN	RANETA LN	GAYUBA LN	125	24	3000				
TYPE I/TYPE III	Type 1	S1405B		SS-002335	1229-G7	AMARO DR	EL COMAL DR	LA MORADA DR	377	36	13540				
TYPE I/TYPE III	Type 1	S1405B		SS-002336	1229-G7	AMARO DR	OROZCO RD	EL COMAL DR	193	36	6938				
TYPE I/TYPE III	Type 1	S1405B		SS-002337	1229-G7	AMARO DR	LA DUENA WY	OROZCO RD	194	36	6979				
TYPE I/TYPE III	Type 1	S1405B		SS-002338	1229-G7	AMARO DR	EL HONCHO PL	LA DUENA WY	262	36	9419				
TYPE I/TYPE III	Type 1	S1603	Friday	SS-003982	1249-H1	BENGAL CT	MONTEGO DR	END	524	28	14672				
TYPE I/TYPE III	Type 1	S1405B		SS-002512	1229-H7	ANTIGUA BL 1/2 Split	TORTUGA CT	SANTO RD	273	75	5208				
TYPE I/TYPE III	Type 1	S1405B		SS-002511	1229-H7	ANTIGUA BL 1/2 Split	BRAVO CT	TORTUGA CT	494	75	18502				
TYPE I/TYPE III	Type 1	S1405B		SS-002510	1229-G7	ANTIGUA BL 1/2 Split	GUINCHO CT	BRAVO CT	268	75	10046				
TYPE I/TYPE III	Type 1	S1603	Friday	SS-022235	1249-H1	POR TECHO CT	MONTEGO DR	END	554	30	16620				
											224245				





Day		Contract	Trash Day	SAPID	TB Map Page	Street Name	Cross Street 1	Cross Street 2	Survey Length	Survey Width	Est. Survey Area	AsBuilt Area SF	AsBuilt Slurry Date	Post	Notify
Thursday	7/14/2016					Tierrasanta									
TYPE I/TYPE III	Type 3	S1405B		SS-002508	1229-G7	ANTIGUA BL 1/2 Split	AMARO DR	GUINCHO CT	492	75	18441				
TYPE I/TYPE III	Type 3	S1405B		SS-002509	1229-G7	ANTIGUA BL 1/2 Split	ROBUSTO RD	AMARO DR	499	75	18702				
TYPE I/TYPE III	Type 3	S1405B		SS-002514	1229-G7	ANTIGUA BL 1/2 Split	MATADOR CT	ROBUSTO RD	416	75	15586				
TYPE I/TYPE III	Type 1	S1601		SS-018016	1249-G1	MELOJO LN	REBOLLA LN	END	270	20	5400				
TYPE I/TYPE III	Type 1	S1601		SS-022820	1249-G1	REBOLLA LN	MELOJO LN	RANETA LN	236	24	5664				
TYPE I/TYPE III	Type 1	S1601		SS-008564	1249-G1	DAFNE LN	BEGIN	END	96	20	1920				
TYPE I/TYPE III	Type 1	S1601		SS-008566	1249-G1	DAFNE LN	BEGIN	END	103	20	2060				
TYPE I/TYPE III	Type 1	S1601		SS-008565	1249-G1	DAFNE LN	BEGIN	ESCARCHOSA LN	131	24	3144				
TYPE I/TYPE III	Type 1	S1601		SS-020238	1249-G1	OAKLEAF PT	ANTIGUA BL	END	224	19	4256				
TYPE I/TYPE III	Type 1	S1601		SS-023234	1249-G1	RIMVIEW WY	LEMONWOOD LN	ANTIGUA BL	257	19	4883				
TYPE I/TYPE III	Type 1	S1601		SS-021810	1249-F1	PINE KNOLL LN	BEGIN	EDGE PARK WY	320	19	6080				
TYPE I/TYPE III	Type 1	S1601		SS-002553	1249-F1	APPLE TREE DR	CAMTO VELASQUEZ	GUISANTE LN	655	38	24890				
TYPE I/TYPE III	Type 1	S1601		SS-022491	1249-F1	QUEMADO CT	ANTIGUA BL	RIMPARK WY	116	29	3364				
TYPE I/TYPE III	Type 1	S1601		SS-022492	1249-F1	QUEMADO CT	BEGIN	ANTIGUA BL	264	29	7656				
TYPE I/TYPE III	Type 1	S1601		SS-023225	1249-F1	RIMPARK WY	BEGIN	QUEMADO CT	200	19	3800				
TYPE I/TYPE III	Type 1	S1601		SS-021197	1249-F1	PARK CREST WY	PARK CREST LN	ANTIGUA BL	88	20	1760				
TYPE I/TYPE III	Type 1	S1601		SS-010453	1249-G1	ESCARCHOSA LN	BEGIN	DAFNE LN	203	19	3857				
TYPE I/TYPE III	Type 1	S1601		SS-010452	1249-G1	ESCARCHOSA LN	DAFNE LN	RANETA LN	98	24	2352				
TYPE I/TYPE III	Type 1	S1405B		SS-002339	1229-G7	AMARO DR	MUCHACHA WY	EL HONCHO PL	219	36	7875				
TYPE I/TYPE III	Type 1	S1405B		SS-002340	1229-G7	AMARO DR	AMARO CT	MUCHACHA WY	246	36	8847				
TYPE I/TYPE III	Type 3	S1405B		SS-002508	1229-G7	ANTIGUA BL 1/2 Split	AMARO DR	GUINCHO CT	492	75	18441				
TYPE I/TYPE III	Type 3	S1405B		SS-002509	1229-G7	ANTIGUA BL 1/2 Split	ROBUSTO RD	AMARO DR	499	75	18702				
TYPE I/TYPE III	Type 3	S1405B		SS-002514	1229-G7	ANTIGUA BL 1/2 Split	MATADOR CT	ROBUSTO RD	416	75	15586				
TYPE I/TYPE III	Type 3	S1603	Friday	SS-003272	1249-H1	AZORES CT	MONTEGO DR	END	517	28	13959				
											217225				



# Tierrasanta

**S1601**  
 — TYPE I/TYPE III  
 — TYPE III

San Diego 1405 1601 & 1603  
 Week 17 C2

	Monday	7/11/2016
	Tuesday	7/12/2016
	Wednesday	7/13/2016
	Thursday	7/14/2016



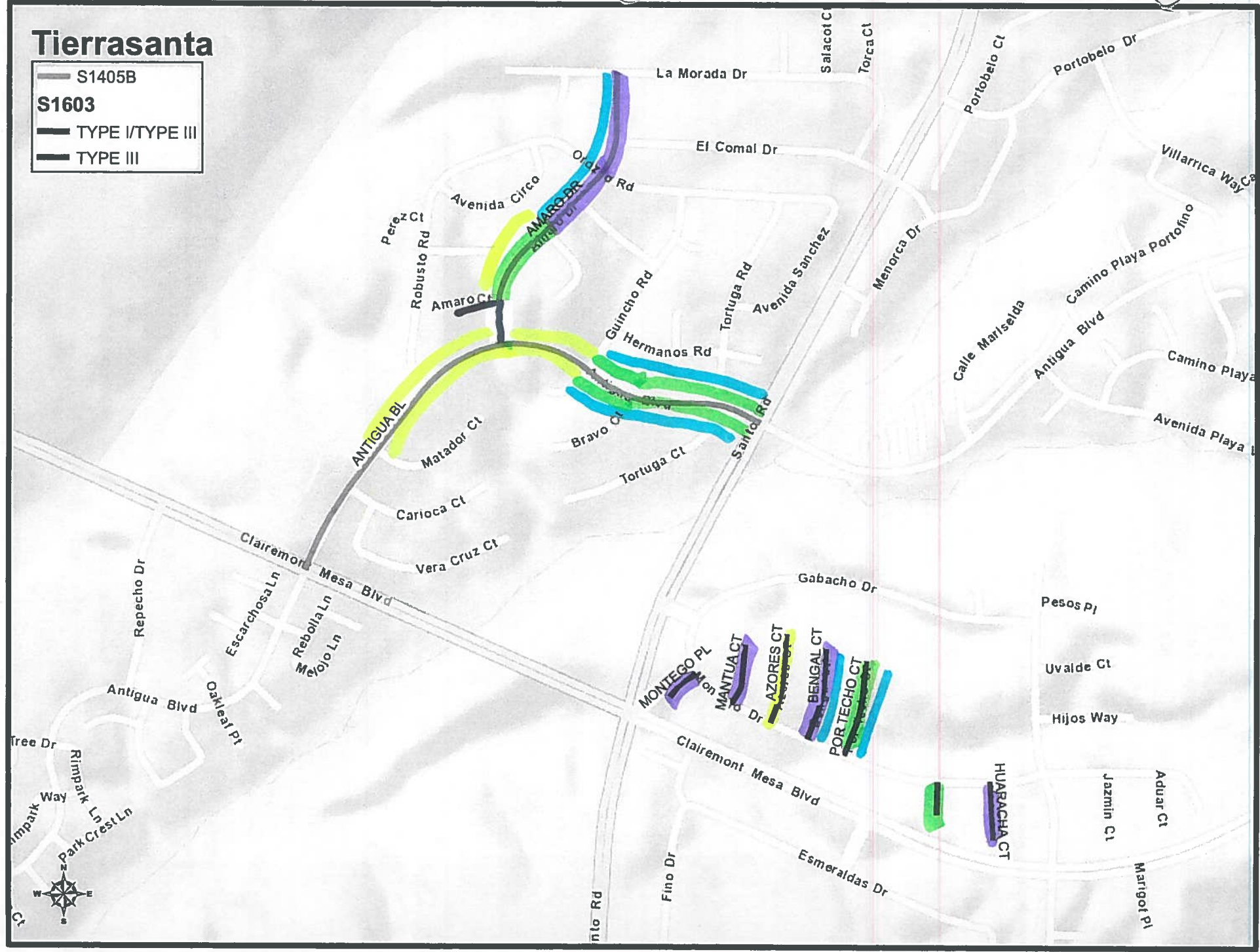
# Tierrasanta

— S1405B

**S1603**

— TYPE I/TYPE III

— TYPE III





92124

San Diego

92124

San Diego

92108

92120

MISSION VILLAGE

RAND McNALLY

SAN DIEGO CO.



SEE 1250 MAP

