

Recreation Recommendations	
R1	Assess a section of the southeastern portion of the Quarry Loop trail for localized improvements to address steepness and erosion issues. Reroute this section of access road if localized improvements are inadequate or infeasible.
R2	Close a couple of sections of old road bed along the northern edge of the Old Quarry.
R3	Assess a section of the eastern portion of the Quarry Loop trail for localized improvements to address steepness and erosion issues. Reroute this section of access road if localized improvements are inadequate or infeasible.
R4	Provide a new section of hike/bike trail to redirect users away from the nearby vernal pool.
R5	Provide a new overlook of the San Diego River.
R6	Close and restore several small sections of existing hike/bike trails or abandoned access roads.
R7	Assess a section of hike/bike trail for localized improvements to address steepness and erosion issues, and potential conflicts with San Diego thornmint habitat. Reroute this section of trail if localized improvements are inadequate or infeasible. Install wildlife compatible fencing and signage adjacent to the existing and potential San Diego thornmint habitat.
R8	Provide a new section of hike/bike trail as an alternate recreational trail connection to Sycott Wash and South Fortuna to avoid a 0.48 mile section of utility access road that sustains 15-30 percent gradients. The trail would begin just north of the San Diego River Crossing and proceed north along the eastern slope above the Sycott drainage and connect to the existing South Fortuna trail. Planning and design of the trail will need to address access concerns related to the Visitor Center Loop quarry immediately to the east and the drainage to the west, both of which contain sensitive resources.
R9	Assess a section of the southern portion of the South Fortuna hiking trail for localized improvements to address steepness and erosion issues. Reroute this section of access road if localized improvements are inadequate or infeasible.
R10	Provide rock climbing access to the eastern face of South Fortuna by constructing a new hiking loop trail from the existing South Fortuna trail. Planning and design of this trail will need to address proximity to bat/raptor roosts, safety concerns relative to falling rocks, and emergency response concerns that include improvements to vehicular access to the area and/or the designation of a helicopter landing area.
R11	Assess a section of the Sycott Valley South Trail for localized improvements to address steepness and erosion issues. Reroute the trail if localized improvements are inadequate or infeasible.
R12	Assess a section of the Sycott Valley trail for localized improvements to reduce the number of creek crossings and erosion issues. Reroute the trail if localized improvements are inadequate or infeasible.
R13	Close and restore a section of old redundant utility access road.
R14	Close and restore a section of redundant park access road.
R15	Close and restore a section of redundant park access road.
R16	Assess a section of the Rim trail for localized improvements to reduce or eliminate encroachment on adjacent vernal pools and watersheds. Reroute the trail if localized improvements are inadequate or infeasible.
R17	Close and restore a section of redundant park access road.
R18	Assess a section of hike/bike trail for localized improvements to address erosion issues.

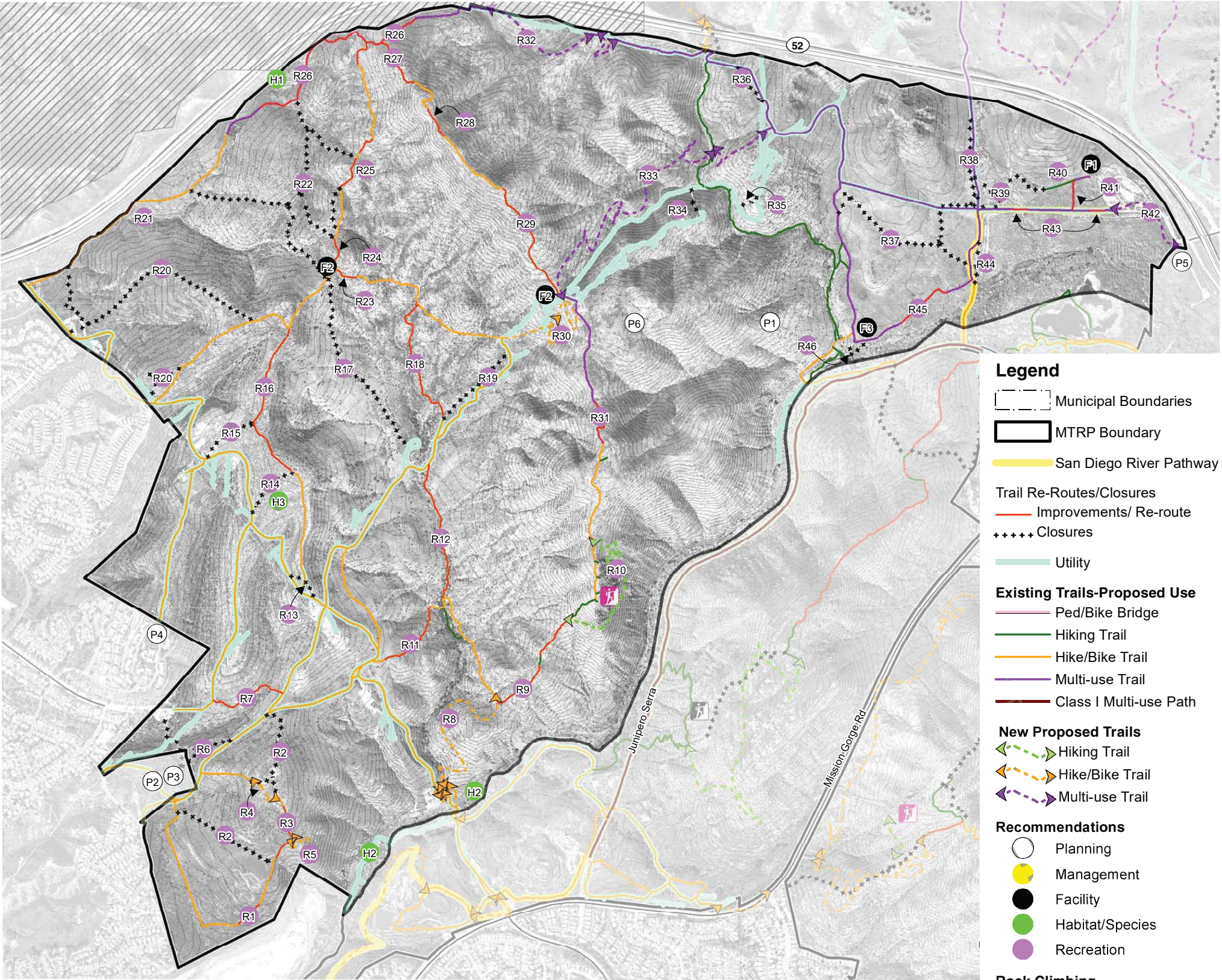
Planning Recommendations	
P1	Consider acquiring the 200+ acres currently owned by the City of San Diego PUD on the eastern slopes of South Fortuna as dedicated parkland. The Department would retain easements for their facilities.
P2	Pursue the acquisition of the San Diego Unified School District parcel for park use or a public access easement.
P3	When the adjacent Camp Elliott Park and San Diego Unified School District parcels (outside MTRP) are developed, construct a trailhead and staging facility consistent with the Mission Trails Design District Ordinance and consider a boundary adjustment to MTRP.
P4	Pursue the acquisition of a public access easement within the SDCWA easement and the Villa Dominique Viewhome Home Owners Association to ensure legal access to the existing ridgeline trail.
P5	Ensure that trail linkages along the length of the park are made as shown in the San Diego River Park Master Plan.
P6	The eastern slope of Fortuna Mountain should remain in its near-natural state, accommodating only trails coming over the ridgeline.

Facility Recommendations	
F1	Construct the last phase of improvements at the East Fortuna Staging Area per Site Development Permit #40-0524 which includes an administrative/maintenance building and a large covered group picnic area at the East Fortuna Staging Area.
F2	Consider providing fire resistant shade structures consistent with the MTRP Design Guidelines (Appendix G) at key interior locations within the Fortuna Mountain area where appropriate.
F3	Reconstruct the Old Mission Dam overlook on the northern river bank. Consider developing the overlook as a deck structure to prevent access from the downslope area.

Habitat/Species Recommendations	
H1	Collaborate with the appropriate parties as needed to develop improved surveillance and enforcement mechanisms to prevent recreational usage of the wildlife tunnel under SR-52, which is impacting its use by wildlife and contributing to trespass on MCAS Miramar.
H2	Install and maintain 'Sensitive Habitat Keep Out' signage along the trails nearest the Southwest Boundary Quarry and the Visitor Center Loop Quarry to protect the significant bat roosts that exist in these locations and issue warnings or citations to all violators.
H3	Map the spatial extents of biological crusts within the Tierrasanta Clay Ridge management area.
H4	Conduct habitat restoration and revegetation activities within disturbed areas as needed.

* General recommendation for plan area

No specific management recommendations unique to the Fortuna Mountain Area were identified during development of the MPU.



Legend

Municipal Boundaries

MTRP Boundary

San Diego River Pathway

Trail Re-Routes/Closures

Improvements/ Re-route

Closures

Utility

Existing Trails-Proposed Use

Ped/Bike Bridge

Hiking Trail

Hike/Bike Trail

Multi-use Trail

Class I Multi-use Path

New Proposed Trails

Hiking Trail

Hike/Bike Trail

Multi-use Trail

Recommendations

Planning

Management

Facility

Habitat/Species

Recreation

Rock Climbing

Existing

Proposed

0

Feet

1500

FIGURE 3-7a

Fortuna Mountain Area Planning Recommendations