

Recreation Recommendations (continued)			
R19	Close and restore a section of redundant park access road.	R35	Close and restore a section of old utility access road that is no longer used, extremely steep, and eroding.
R20	Close and restore sections of redundant park access road, steep and eroding access road, and existing hike/bike trails within Shepherd Canyon.	R36	Close and restore a section of redundant park access road.
R21	Assess a section of the North Perimeter trail within Shepherd Canyon for localized improvements to address steepness and erosion issues. Reroute this section of trail if localized improvements are inadequate or infeasible.	R37	Close and restore a redundant section of park access road within the Grasslands area.
R22	Close and restore a redundant, steep and eroding sections of park access road and existing hike/bike trails between the Rim Trail and the North Perimeter Trail.	R38	Close and restore the existing hike/bike trail that parallels the utility access road into Spring Canyon and a section of redundant utility access road. The access road into Spring Canyon will need to be regraded to restore sheet flow drainage across the road to prevent the muddy conditions that contributed to the formation of the unauthorized trail.
R23	Assess a section of the Suycott Valley Bypass Trail for localized improvements to address steepness and erosion issues. Reroute this section of trail if localized improvements are inadequate or infeasible.	R39	Close and restore a redundant section of park access road within the Grasslands area that crosses wetland habitats.
R24	Assess a section of the Rim trail for localized improvements to address steepness and erosion issues. Reroute this section of trail if localized improvements are inadequate or infeasible.	R40	Utilize the vernal pool along the trail from the East Fortuna Staging Area as an educational and interpretive resource about the ecology of vernal pools. Develop interpretive signage and a brochure/pamphlet for distribution at the Visitor Center. Realign the existing fencing outside of the vernal pool and restore the impacted area.
R25	Assess a section of the Rim trail for localized improvements to address steepness and erosion issues. Reroute this section of trail if localized improvements are inadequate or infeasible.	R41	Improve as a multi-use trail a section of unauthorized user created trail to connect the northern access route from the East Fortuna Staging Area to the southern utility access road.
R26	Assess a section of the North Perimeter trail for localized improvements to address steepness and erosion issues. Reroute this section of trail if localized improvements are inadequate or infeasible.	R42	Construct a new multi-use path from the utility access road gate east along the edge of the paved entrance road to the East Fortuna Staging Area. This path would be part of the San Diego River Pathway as envisioned in the San Diego River Park Master Plan and should be implemented once plans for the eastern extension of the Trail outside the park have been solidified. An information kiosk should be constructed at the east end of the path.
R27	Assess a section of the North Fortuna trail for localized improvements to address steepness and erosion issues. Reroute this section of trail if localized improvements are inadequate or infeasible.	R43	Assess two sections of the utility access road for localized improvements to improve the hydrologic connectivity of the wetland and floodplain areas it crosses while providing a safer surface for recreational users.
R28	Assess a section of the North Fortuna trail for localized improvements to address steepness and erosion issues. Reroute this section of trail if localized improvements are inadequate or infeasible.	R44	Close and restore an unauthorized user created trail within the Grasslands area that encroaches on San Diego Ambrosia habitat.
R29	Assess a section of the North Fortuna trail for localized improvements to address steepness and erosion issues. Reroute this section of trail if localized improvements are inadequate or infeasible.	R45	Assess a section of the Grasslands Loop trail for reroute to prevent degradation to nearby sensitive resources.
R30	Construct a new section of hike/bike trail to provide an alternate recreational trail connection to the Fortuna Saddle on the south side to replace a 0.22 mile utility access road that sustains greater than 20 percent gradients, with sections at 40 percent. The trail would begin at the utility access road where an unnamed trail connects from the west and proceeds up to the northeast along the western slope of South Fortuna to the saddle.	R46	Close and restore the trails from the dam up to the overlook and add wildlife compatible fencing and signage to direct hikers to use the approved trail access.
R31	Assess a section of the South Fortuna trail for localized improvements to address steepness and erosion issues. Reroute this section of trail if localized improvements are inadequate or infeasible.		
R32	Construct a new section of multi-use trail to bypass two extremely steep sections of utility access road along the North Perimeter trail.		
R33	Construct a new section of multi-use trail to bypass the existing utility access up to the Fortuna Saddle.		
R34	Close and restore a section of old utility access road that is no longer used, extremely steep, and eroding.		

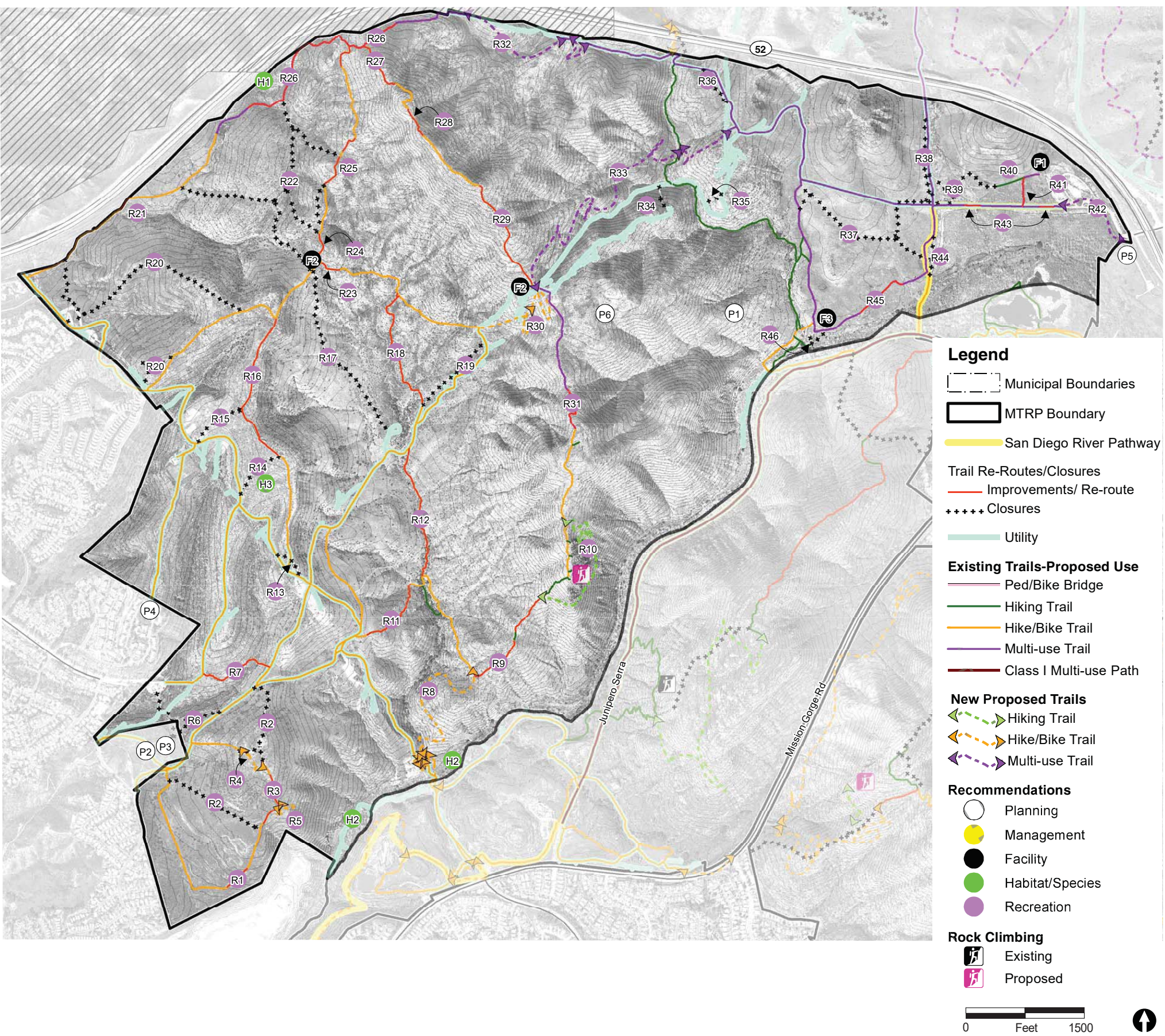


FIGURE 3-7b  
Fortuna Mountain Area Planning Recommendations